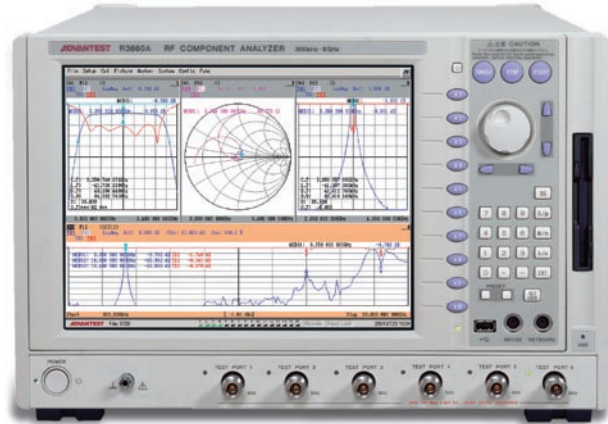


For 6-port Full Parameter Measurement



Overview

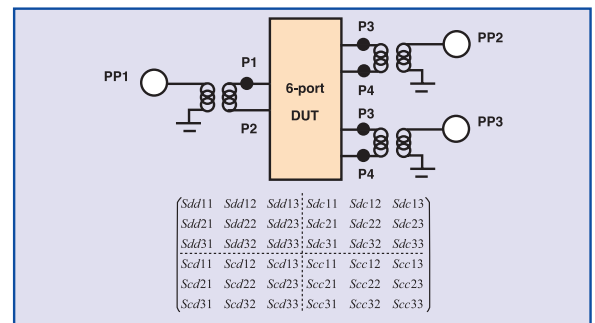
With the trend towards integrated W-LAN systems, multi-band cellular phones and use of balanced circuits, high-frequency devices supporting 9, 10, and even 11-ports or more have become commonplace. Traditionally, a 4-port network analyzer in combination with an external multi-port test set has been used for efficient testing of such devices.

However, with their limited numbers of measurement channels, external test sets are not capable of handling the complete set of parameters associated with the number of ports under test. Multi-band devices for cellular phone applications typically have one ANT port, multi-band Tx, multi-band Rx, and balanced Rx. The test sets are optimized to meet this configuration and thus not hampered by the limited number of test channels.

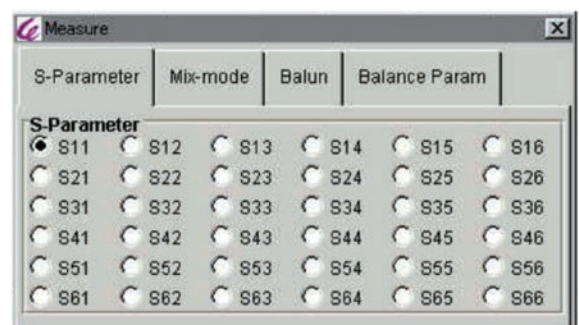
On the other hands, a limited number of test channels could pose a problem in testing W-LAN devices that use a diversity antenna or devices that have three balanced ports. The R3860A Network Analyzer 6-port model resolves this issue, since it supports 6-port full parameter measurement capabilities. With a 6-port full calibration feature that eliminates errors from all 15 paths on its 6-ports and with seven receivers (including one for the reference channel), the R3860A delivers high-speed, high-accuracy measurement of 6-port devices.

Features

- High-speed measurement of 36 parameters in 15 paths on 6-ports
- High-accuracy measurement of balanced 3-port devices
- Support of 6-port mixed-mode S-parameter analysis
- World's first analyzer with a 6-port full calibration capability



6-port mixed-mode analysis



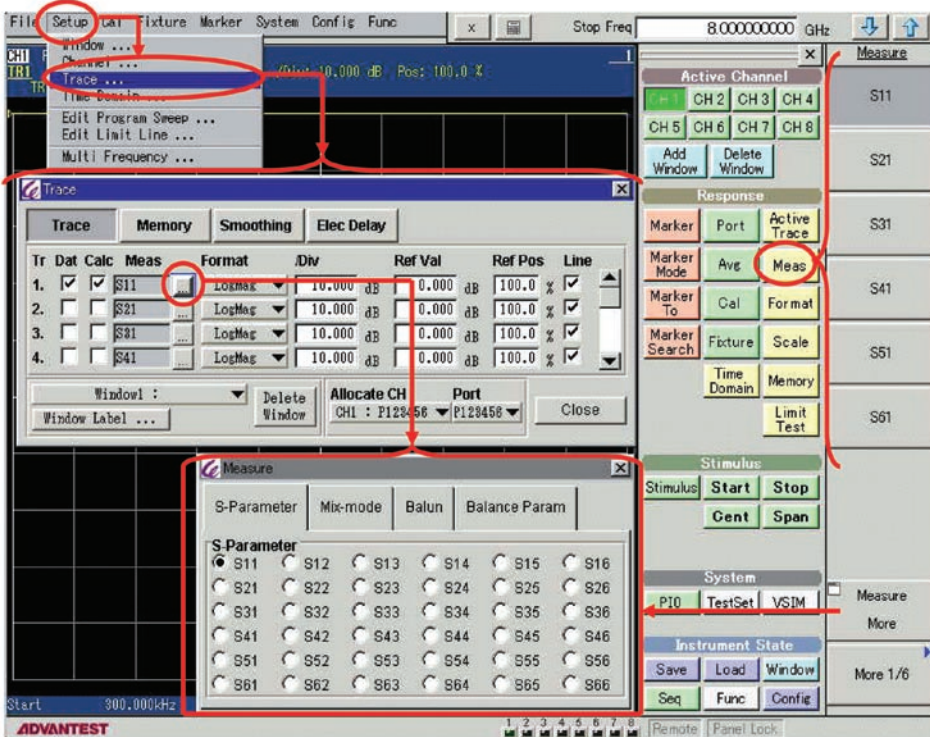
6-port and 36-parameter selection screen

S-Parameter Setting Procedure

Select "Meas" from the utilities menu to open the "Measure" menu in the side menu.

Select "Measure More" from the Measure menu to open the Measure dialog box.

Alternatively, select Setup→Trace...→Meas... from the menu bar to open the Measure dialog box.



Please be sure to read the User's Manual thoroughly before using the product.

Technology Support on the Leading Edge
ADVANTEST[®]

Your Local Representative

ADVANTEST CORPORATION Shin-Marunouchi Center Building, 1-6-2 Marunouchi, Chiyoda-ku, Tokyo 100-0005, Japan
 Tel: +81-3-3214-7500 <http://www.advantest.co.jp>

Korea: Advantest Korea Co., Ltd.
China: Advantest (Suzhou) Co., Ltd.
Taiwan: Advantest Taiwan Inc.
Singapore: Advantest (Singapore) Pte. Ltd.
North America: Advantest America Inc.
Europe: ROHDE & SCHWARZ Europe GmbH

Phone: +82-2-532-7071
 Phone: +86-21-6485-2725
 Phone: +886-3-5532111
 Phone: +65-6274-3100
 Phone: +1-732-346-2600
 Phone: +49-89-4129-13711